

# MODULAR WHEELS ORDER FORM



## BRANCH ORDER DETAILS

To

From

## SUPPLY REQUIREMENTS

Quantity Required

Required Completion Date

## WHEEL DETAILS

Export Air Freight Required

Yes

No

## CUSTOMER CONTACT DETAILS

Customer Name

Customer Account Number

Contact Name

Customer Address

Postcode

Phone

Mobile

## VEHICLE DETAILS

Vehicle Type

Model

Year

Guard / Caliper Sheet Attached

Yes

No

Modifications / Comments (Specify)

ROH Wheels: Head Office  
28 Sheffield Street  
Woodville North  
South Australia 5012

PO Box 5  
Regency Park  
South Australia  
5942.

Telephone (08) 8468 4140  
Facsimile (08) 8468 4141  
Email: sales@roh.com.au  
Website: www.rohwheels.com

Print Form

Email to ROH

Clear Form

## ROH OFFICE USE ONLY

### ORDER COMPLETION DATE

ROH Job Number

Part Number

Final Viewer Name

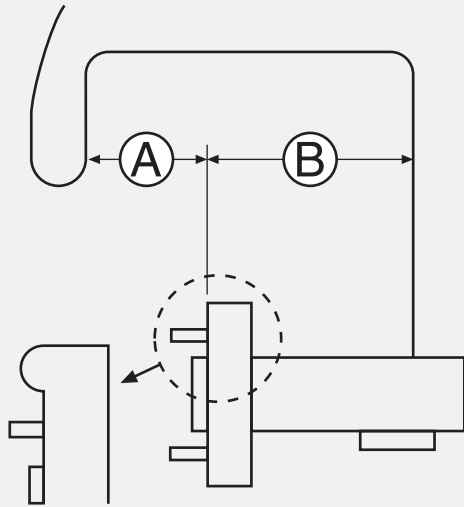
Docket Number

## BUILD SPECIFICATION SECTION

# WHEEL ARCH SPECIFICATIONS



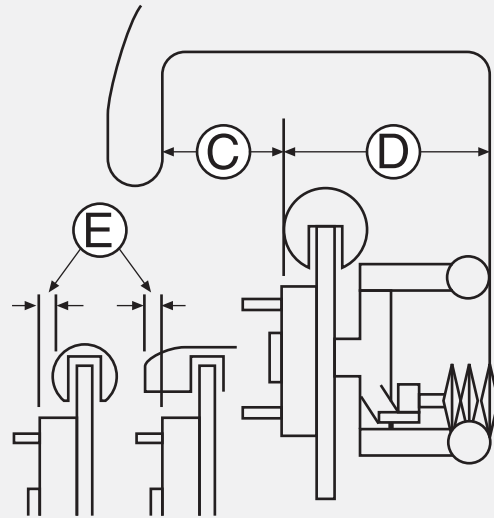
To determine your order with proper clearance of suspension components and guards, measure as shown using a straight edge across the bolt on face of the drum or hub and fill in the details below. **NOTE: for correct clearances place jack under axles/suspension, not under the chassis.**



### REAR

Measure to inner lip of guard (A) and to inner panel or closest suspension component that will contact first (B). **\*\*Note, some drum brakes have an edge which protrudes in front of the bolt-on face (see detail). This amount of protrusion (if any) must be added to (A) and subtracted from (B).**

(A) (B)

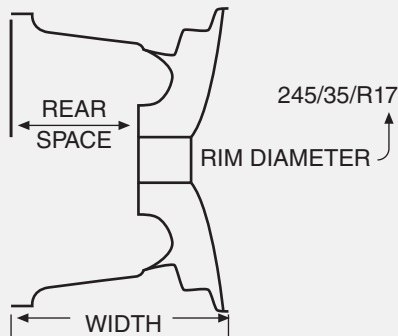


### FRONT

Measure from the hub to inner lip of guard (C) and to the closest steering or suspension component that would contact the wheel/tyre (D). The brake calliper will be either in front or behind the hub. Measure this distance (E) and state if it is in front or behind.

(C) (D) (E)

If OE or current wheel specifications are known, record them below. If you are unsure, check the front and rear of the rim as manufacturers usually show the rim width, dia. and offset. Should there be no visible markings, make the following measurements and record the results.



### OE OR EXISTING WHEELS

Front: Diameter Width Offset

Rear: Diameter Width Offset

### MEASUREMENTS

Front: Diameter Width Rear space

Rear: Diameter Width Rear space

### ADDITIONAL INFORMATION

Vehicle Type

Model

Customer Name

Phone

Comments

Have you filled out the modular order form page ?

Yes No

ROH Wheels: Head Office  
28 Sheffield Street  
Woodville North  
South Australia 5012

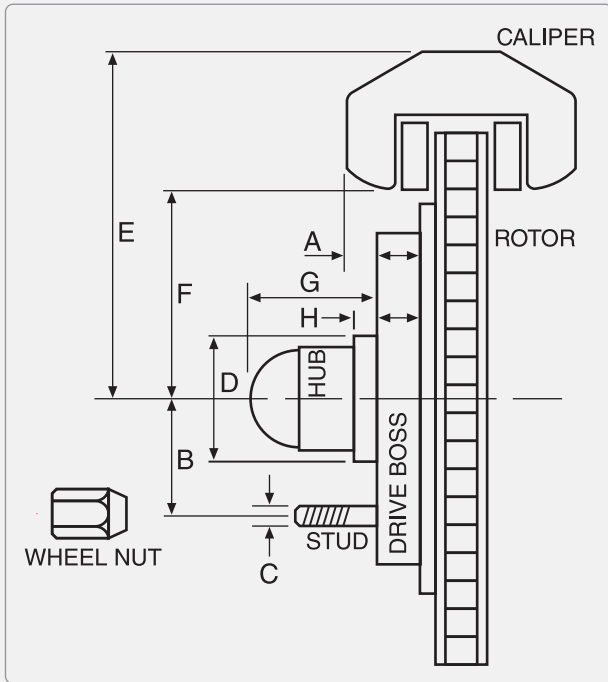
PO Box 5  
Regency Park  
South Australia  
5942.

Telephone (08) 8468 4140  
Facsimile (08) 8468 4141  
Email: sales@roh.com.au  
Website: www.rohwheels.com

Print Form

Email to ROH

Clear Form



### MEASURE UP INFORMATION

Measured By

Date Measured

Vehicle Type

Model

Comments

### FRONT BRAKE

DISC DRUM

<b>A</b>	Caliper Protrusion
<b>B</b>	PCD
<b>C</b>	Stud Ø / Pitch
<b>D</b>	Hub Location Ø
<b>E</b>	Caliper Radius Max.
<b>F</b>	Inside Caliper Radius.
<b>G</b>	Hub Length
<b>H</b>	Location Length

Brake Type / Comments

### REAR BRAKE

DISC DRUM

<b>A</b>	Caliper Protrusion
<b>B</b>	PCD
<b>C</b>	Stud Ø / Pitch
<b>D</b>	Hub Location Ø
<b>E</b>	Caliper Radius Max.
<b>F</b>	Inside Caliper Radius.
<b>G</b>	Hub Length
<b>H</b>	Location Length

Brake Type / Comments